

# TOSHIBA

## Region Protection Code - RPC

**GB** Page 1

**D** Seite 7

**F** Page 13

**I** Pagina 19

**E** Página 25

**S** Sida 31

STORAGE DEVICE DIVISION



**TOSHIBA EUROPE**

[www.toshiba-europe.com](http://www.toshiba-europe.com)

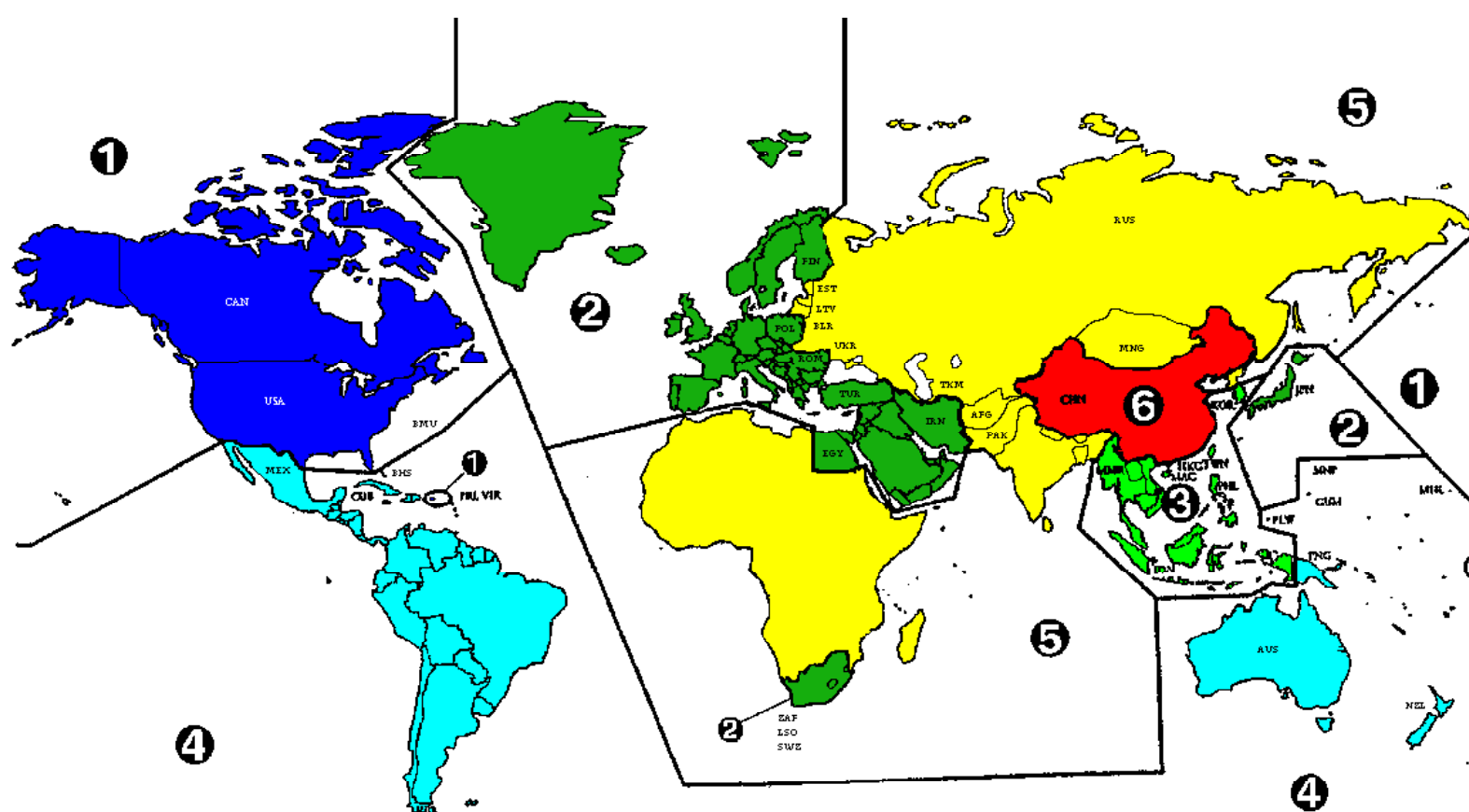


# What is RPC II?

## The Global Problem

Because the movie industry distributes films to different parts of the world at different times with a variation of up to 6 months, they requested the DVD Alliance to make DVD Movie disks with a different code for different global regions. The world is split up into 6 regions depending on the distribution arrangement. For example: The USA and Canada are in region 1, Europe and Japan are in region 2, and so on.

By placing a code on the DVD Movie disk, the disk becomes viewable only on hardware (DVD-ROM or DVD Player) that is switched to that particular code. In other words DVD Movie disks from the USA will not play on DVD players or PC's made for the European market.



Because the handling of different coded hardware for different global regions is very impracticable and costly for manufacturers, the DVD Alliance conceived a clever method of encoding the hardware during the first few times the DVD Movies are used. This is called RPC II (Regional Playback Control Phase 2).

## How does RPC II work?

For the PC user RPC II works together with an RPC II enabled DVD-ROM drive. The drive has a built in storage chip (FLASH ROM) where the regional code information is stored. For PC users there are many DVD Movie playback programs (RPC II compatible) available which interactively set the drive to the region of the movie inserted. The user can change the drives region 5 times without the change becoming permanent – *5 User Changes*. For users without RPC II compatible movie playback programs additional software to set the region will be available either from the Internet ([www.toshiba-europe.com](http://www.toshiba-europe.com)) or from Toshiba's 'Manuals and More' CD-ROM.

## What happens if I move from one region to another?

If you move from one region to another you can utilise the region set utility in combination with a correctly encoded DVD movie title, to adjust the settings on the DVD-ROM drive.

If you have exceeded the maximum number of user changes allowed for whatever reason, it is still possible to RESET the DVD-ROM drive by sending it to official Toshiba dealers, distributors or service centres. This Manufacturer Reset can also occur up to 5 times – *5 Manufacturer Changes*.

In practice we do not expect people to use this feature (or very rarely), unless they intend to sell off their library of DVD Movies, and start again in a different region, and repeat this a further 4 times.

## Which drives does RPC II affect?

RPC II will be implemented on the new generation of Toshiba DVD-ROM drives that become available during Q4 1999. Toshiba expects all new drives and systems to support RPC II by January 2000.

Current drives do not use the RPC II system and rely on the DVD movie decoder hardware or software to support individual regions (RPC I).

The DVD Alliance does not license multiple region support.

## Planned next generation models including RPC II are:

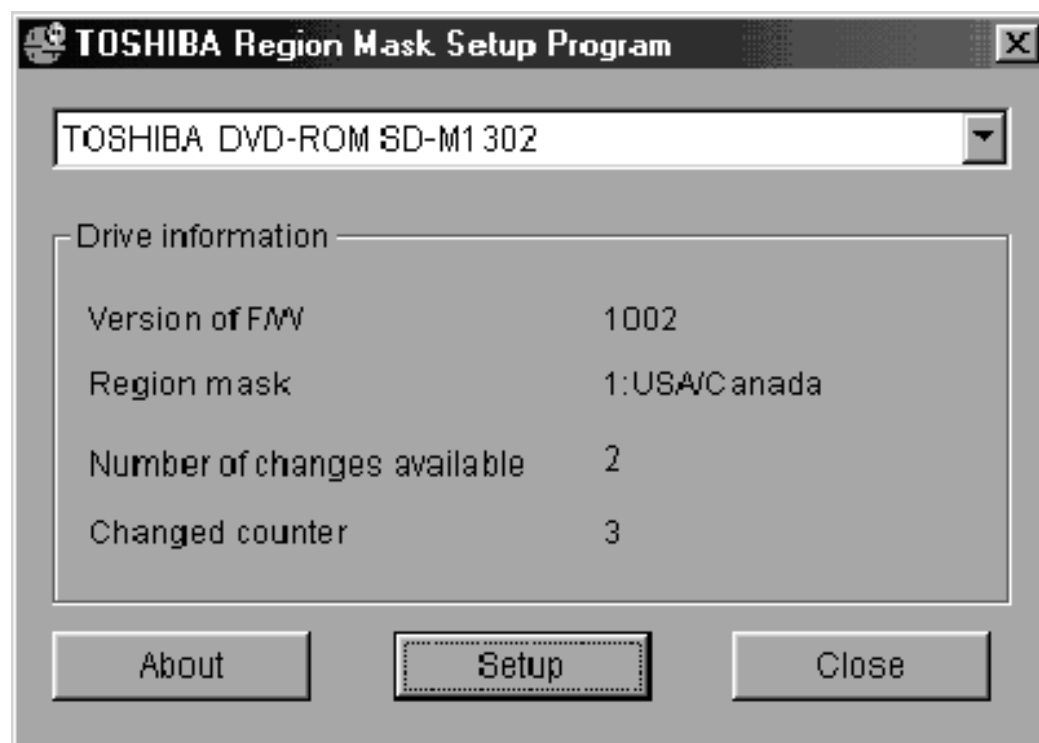
- ☐ TOSHIBA SD-M1302, 8x, ATAPI, Half-Height, DVD-ROM drives.
- ☐ TOSHIBA SD-C2302, 6x, ATAPI, Slim-line, DVD-ROM drives.
- ☐ TOSHIBA SD-W1111, SCSI, Half-Height DVD-RAM drives.
- ☐ TOSHIBA SD-R1002, 4x CD-R/RW, 4x DVD-ROM Combination drives.

## How to change the region on a drive?

In order to get the RPC II scheme to work properly it is necessary to use:

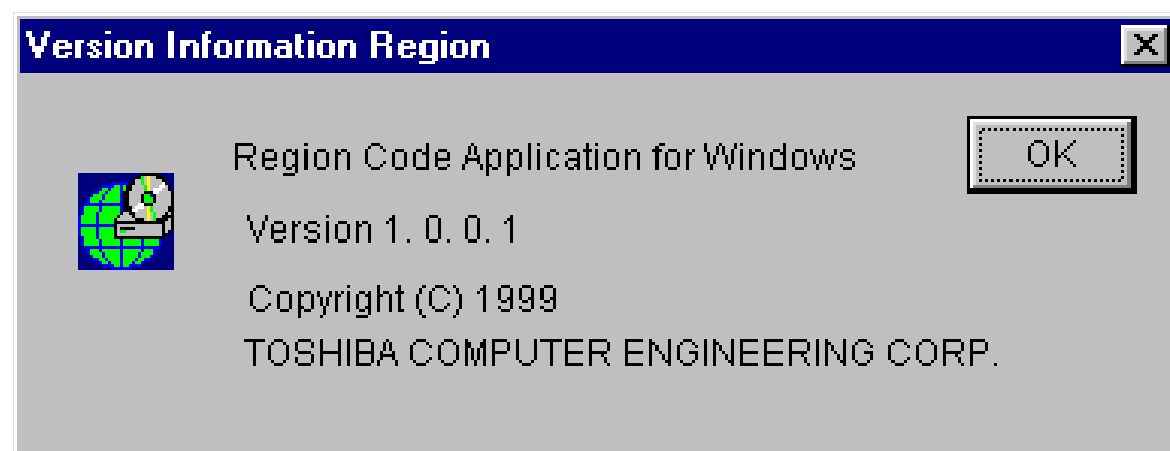
- ☐ RPC II compliant movie playback programs.
- ☐ Toshiba's region select utility for Windows.
- ☐ Microsoft's region select utility available for Windows'98.

**Step 1:** As the regional change procedure looks very similar on all programs we want to explain the procedure using the TOSHIBA region select utility.

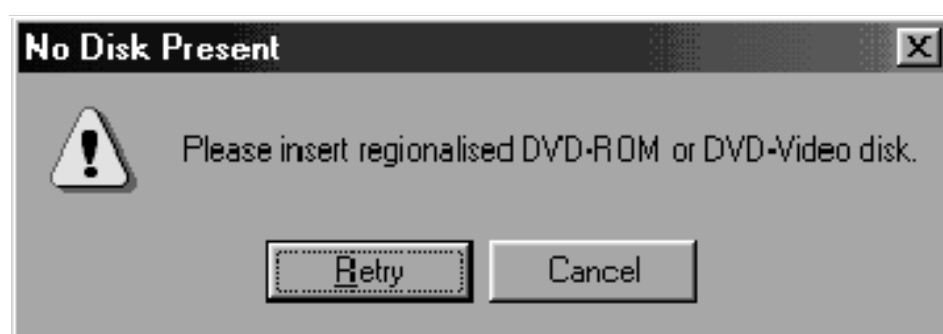


The initial screen provides information about the current settings and the number of User Changes available.

If you press the "About" button, the following message box is displayed:



**Step 2:** Before the current drive region can be set or changed, a regionally encoded disk is requested by the set-up program.



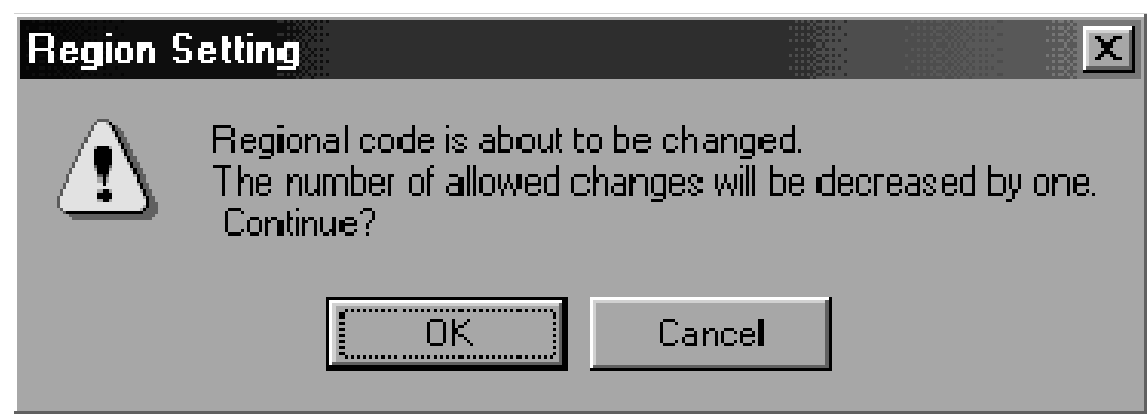
When a multi-region DVD disk is inserted it is possible to choose any region, but be careful this will also decrease your region counter by one.



**Step 3b:** When a single region DVD disk is inserted the program leaves only one choice of selection.



**Step 4:** A final warning provides an opportunity to stop the regional changing process.



**Step 5:** Final confirmation that the region has successfully been changed or set.

